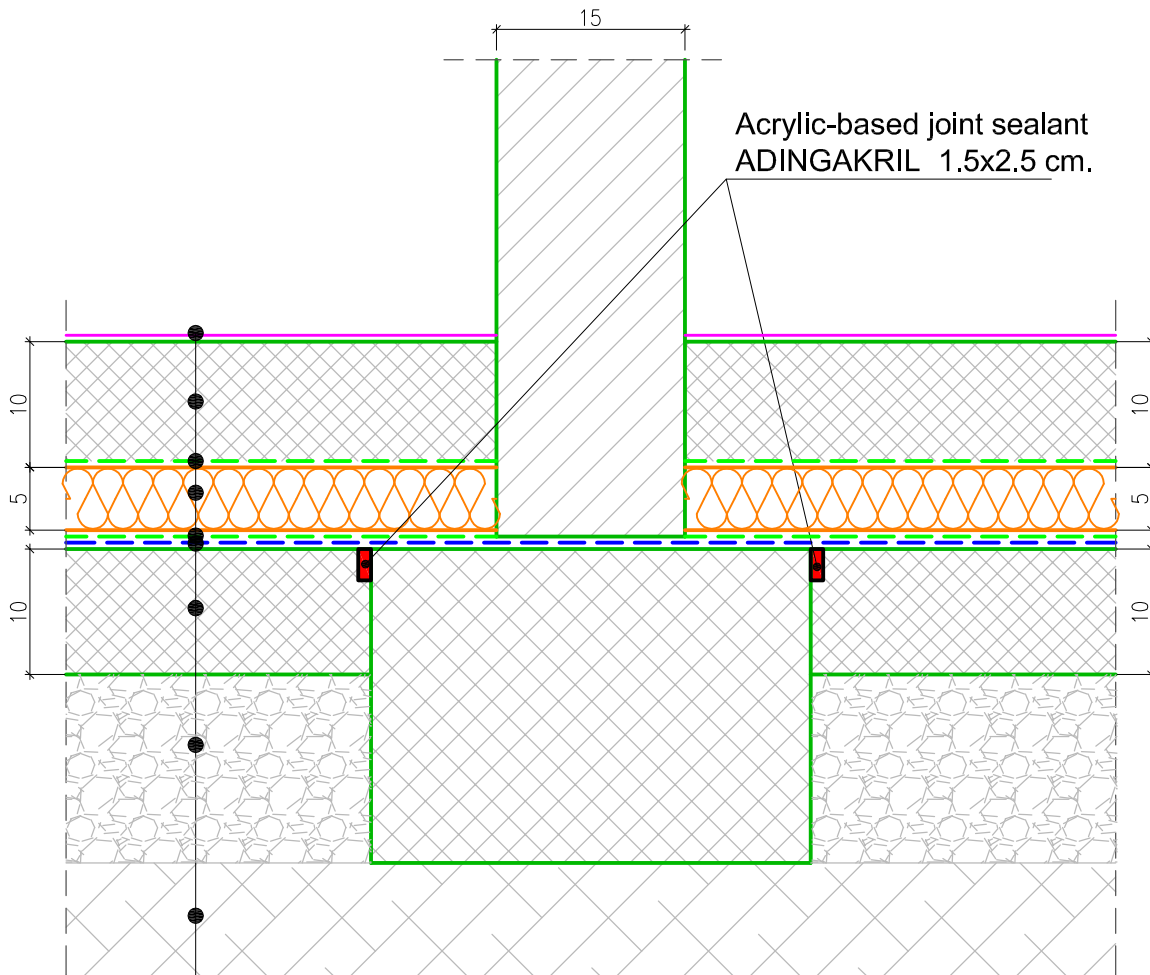


# DETAIL FOR CONSTRUCTION OF HYDROISOLATION OF CENTRAL FOUNDATIONS - FOUNDATION BEAMS AND PEARS



- Cement-based industrial floor PODING-K
- Reinforced concrete plate C25/30, d=10-12 cm.
- Poly-Ethylene sheet cover
- Thermoisolation expanded polystyrene d=5 cm.
- Poly-Ethylene sheet cover
- Hydroisolation HIDROMAL FLEKS
- Hydroisolation base, concrete plate C20/25
- Compressed gravel
- Compressed soil